

# Inpatient Stroke Care

## Restoring Functional Independence

The UofL Health – Frazier Rehabilitation Institute – Stroke Program, part of the Center for Advanced NeuroRehab, aims to restore individuals to optimal levels of physical, cognitive, and emotional recovery following stroke. The program, accredited by the Commission on Accreditation for Rehab Facilities (CARF), also focuses on prevention, community awareness, and wellness through partnerships. This includes providing our patients and community with resources and support groups.

### Inpatient Stroke Program

The Inpatient Stroke Program focuses on helping patients increase their independence and providing training for caregivers to assist with a successful daily routine upon returning home. Each patient will have a daily therapy schedule reflecting the combination of therapies needed to meet his/her specific treatment goals. Stroke patients receive at least three hours of therapy a minimum of five of seven days each week.

Caregivers are an important part of the inpatient rehab process and are encouraged to participate in education and training to make the transition home safe and successful.

The program serves patients of all ages and at all stages of the recovery process. Because there is evidence that people who have had a stroke are at increased risk for subsequent stroke(s), a primary focus of the stroke program is education on prevention and health behaviors that impact stroke risk. Choosing Frazier Rehab Institute gives patients access to expert providers at UofL Hospital's Comprehensive Stroke Center, should additional support be needed.

Additionally, the rehabilitation program is designed to meet the needs of each patient and varies based on the physical and cognitive changes that occurred and any goals related to returning home. Restoring an individual's functional independence while re-integrating them into their homes and community in meaningful ways is our goal.

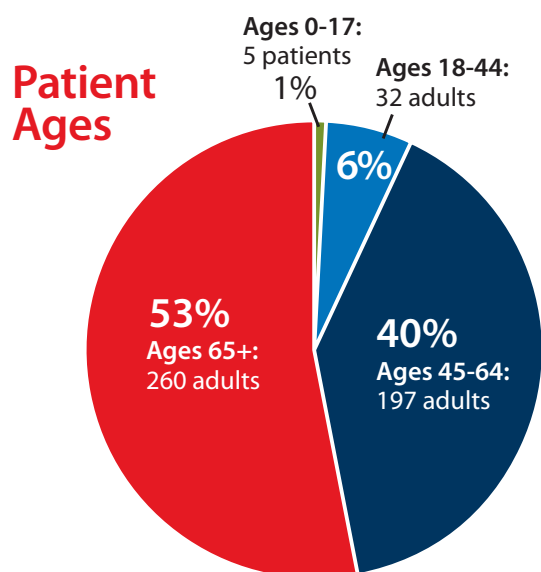
### Continuum of Care

Once inpatient rehab is complete, the Center for Advanced NeuroRehab offers a pathway for comprehensive outpatient neuro-rehabilitation for patients of all ages who have sustained an acquired brain injury or other neurological diagnoses.

### Stroke Rehab Patients in 2023

**494** Inpatient Patients  
Representing **22%** of all Frazier Rehab Admissions

**14.4 days** | Approximately two weeks  
Average length of stay for patients with stroke diagnosis.



Frazier Rehabilitation Institute  
**UofL Health**

Center for Advanced NeuroRehab



## Rehabilitation Hospitals Deliver Higher Quality Care, Better Results

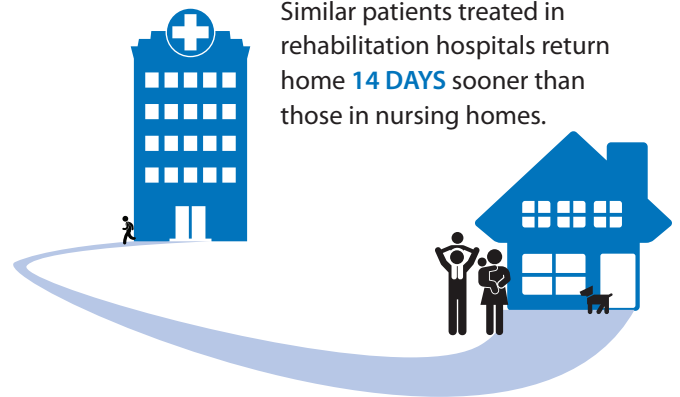
Patients who need medical rehabilitation often must choose between receiving care at a rehabilitation hospital or nursing home. Although these two settings serve similar patients, rehabilitation hospitals provide a far higher level of care that leads to better outcomes.

## Study Shows Improved Outcomes and Quality of Life

A new study shows that patients treated in rehabilitation hospitals and units have better clinical outcomes and quality of life than those treated in nursing homes. The study compared clinically similar patients over a two year period following discharge from rehabilitation hospitals or nursing homes.

### ▶ Go Home Earlier

Similar patients treated in rehabilitation hospitals return home **14 DAYS** sooner than those in nursing homes.



### ▶ Remain Home Longer

Rehabilitation hospital patients also are able to be at home **51 DAYS** longer and had fewer hospital readmissions.

*Source: American Medical Rehabilitation Providers Association*

## Frazier Rehabilitation Institute

**UofL** Health

### Center for Advanced NeuroRehab Stroke Program

220 Abraham Flexner Way  
Louisville, KY 40202  
P: 502-560-8389  
P: 502-582-7679  
UofLHealth.org

*The Stroke Program has met the rigorous standards of the Commission on Accreditation of Rehabilitation Facilities (CARF) as a specialty brain injury program.*



	Rehab Hospitals	Nursing Homes
	Required	Not Required
Close medical supervision by a physician with specialized training in rehab		
Multidisciplinary team approach that includes 24-hour rehab nursing		
Three hours of intensive therapy 5 of 7 days per week		
Licensed and accredited for hospital level rehab care		



*Source: American Medical Rehabilitation Providers Association*